

# 2026

WWW.DSCNWA.ORG

# State of the Organization



Down Syndrome  
Connection  
OF NORTHWEST ARKANSAS



## 2026 – 2027 BOARD OF DIRECTORS

**President:** Cyndi Najjar   **Vice President:** Lindsay Lewis   **Treasurer:** Zach Stevens   **Secretary:** Susie Passmore  
Victoria Branch – Tiffany Doty – Meredith Hayes – Scott Jones – Susan Templeton  
**Advisory Board:** Jarrod Reeves – Trae Norton



# Why We are Here

***NEW: Our Mission*** is to ***enrich lives of individuals with Down syndrome*** within Northwest Arkansas and ensure they and their families have ***access to the support and resources*** necessary to reach their full potential at ***all stages of life***.

***OLD: Our Mission*** is to facilitate ***inclusion*** and ***respect*** for individuals with Down syndrome within the Northwest Arkansas community, ensure they have ***access to the support and resources*** necessary to reach their ***full potential at all stages of life***.

***Our Vision*** is that individuals with Down syndrome in Northwest Arkansas are able to ***participate*** in a meaningful way ***at work and at play***, are able to ***achieve their aspirations***, and are welcomed as ***valued community members***.

**Empowering Every Step, Celebrating Every Milestone**

**S  
T  
A  
F  
F**

**CHIEF OPERATING  
OFFICER**



*Nicole*

Community Outreach  
Funds Development  
Org Strategy  
Program Facilitation  
Fundraising Events  
Medical Outreach

**OFFICE MANAGER**



*Heather*

Administrative  
Financials  
Media and Marketing  
Volunteers  
Member Support



# BOARD OF DIRECTORS



Cyndi Najar  
President



Zach Stevens  
Treasurer



Lindsay Lewis  
Vice President



Susie Passmore  
Secretary



Victoria Branch



Tiffany Doty



Meredith Hayes



Scott Jones



Susan Templeton

# ADVISORY BOARD



Jarrod Reeves



Trae Norton

# 2025 Impact Report (Jan-Dec)

303



Families with Down  
Syndrome Served

Ages 0-40+

83

Total  
Programs  
& Events

286 Hours

9

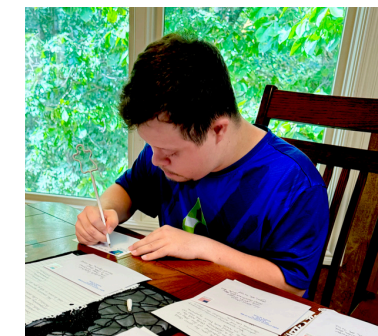


NEW Parent  
Baskets Delivered

Launched Medical  
Outreach at Willow Creek



- 6 Training Sessions
- 61 Healthcare Professionals Attended
- 96% Recommend Program



350

Handwritten Thank  
You notes from Liam



161

Volunteers  
Donated

818

Hours



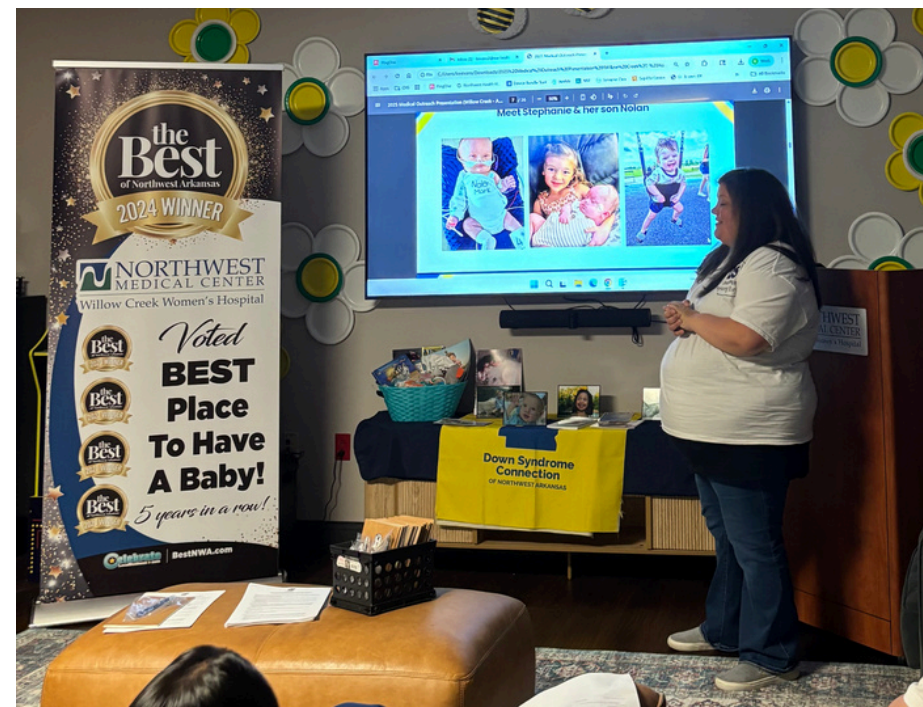
Connecting Individuals with Down Syndrome and Their Families in Northwest Arkansas since 2006

# Medical Outreach Progress

## Launched Training Program at Willow Creek



- 2 Training Sessions
- 18 Healthcare Professionals Attended
- 98% Recommend Program



### Healthcare Professional Resources

PRENATAL & NEWBORN  
FIRST STEPS  
EMPOWER EVERY STEP  
EMPOWERING EVERY STEP TRAINING MANUAL

- BINDER CONTENTS:**
- Information on DSCNWA
  - Reference Manuals
  - Supportive Documents for Ds
  - Guidelines for Referral Process
  - Impact Reporting Procedures
  - Resources at Local & National Levels

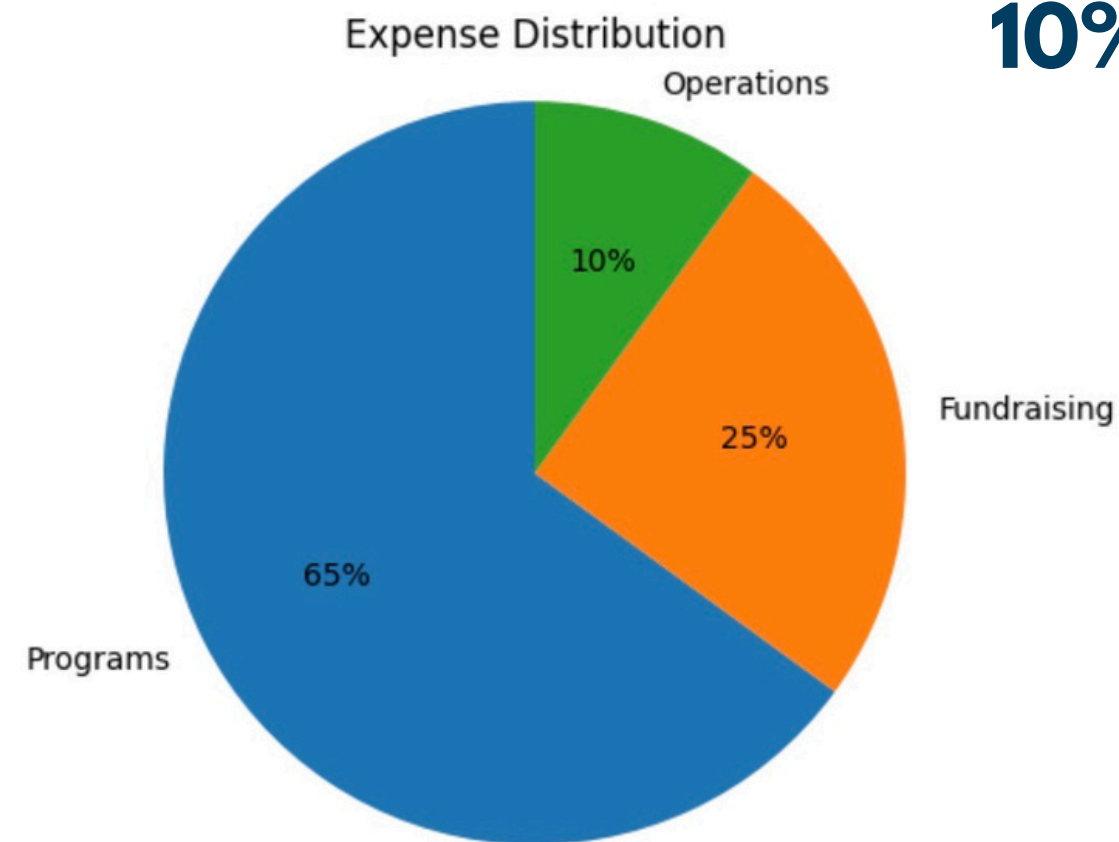
\*All resources for patients are available in English and Spanish

# Financials

**Year Ended December 31, 2025**  
**Unaudited Numbers**

**Total Revenue: \$84,479**  
**Total Expenses: \$150,162**  
**Total Net Assets: \$247,077**

**How Funds Are Used**  
**65% Programs & Family Support**  
**25% Fundraising**  
**10% Operations**



**Includes proportional allocation of staff time supporting programs, events, and organizational operations.**

# Current Strategic Initiatives

## SUSTAINABLE ORGANIZATION

### FINANCIAL STABILITY

DSCNWA is a sustainable organization with an engaged support structure of Employees, Board of Directors and Volunteers, and diversified fundraising to deliver on our mission.

- BUILDING CREDIBILITY AND AUTHORITY
- COMMUNITY ENGAGEMENT AND PARTNERSHIPS
- VISIBILITY AND OUTREACH
- FINANCIAL HEALTH AND STABILITY
- STRONG GOVERNANCE AND LEADERSHIP
- OPERATIONAL EFFICIENCY AND EFFECTIVENESS

## BUILDING COMMUNITIES

### TRUSTED RESOURCE

Build community of members and with the NWA Community

### PROGRAMMING

Facilitate key events for the DSCNWA community while also welcoming the broader community

*(NWA COMMUNITY MAY INCLUDE MEDICAL PROVIDERS, NON-PROFITS, OTHER ORGANIZATIONS, INITIATIVES, INDIVIDUALS OR FAMILIES, ETC.)*

- DIVERSE, INCLUSIVE & ADAPTABLE OFFERINGS
- PARTICIPANT ENGAGEMENT AND IMPACT
- OUTREACH AND COMMUNICATION

# Sustainable Organization

## Celebrations & Fundraisers

**CELEBRATE**  
World Down Syndrome Day  
3.21.26

**AT BIG WHISKEY'S**

3600 SE GUESS WHO DR., STE 2,  
BENTONVILLE, AR 72712  
1320 N COLLEGE AVE  
FAYETTEVILLE, AR 72703  
1787 W PLEASANT GROVE RD  
ROGERS, AR 72758  
2998 US-412  
SILOAM SPRINGS, AR 72761

4:30-7:00 PM

SOCK SALE

Adult sizes  
\$15 each or 2 pairs for \$25  
Children's sizes  
\$12 each or 2 pairs for \$20

Scan the QR code to order custom World Down Syndrome Day socks.

Get a 2 pack for a discounted price!

Pick-ups will be at future programs or contact fundraising@dscnwa.org to schedule during office hours.

Big Whiskey's will donate 10% of sales at three NWA locations during DSCNWA!

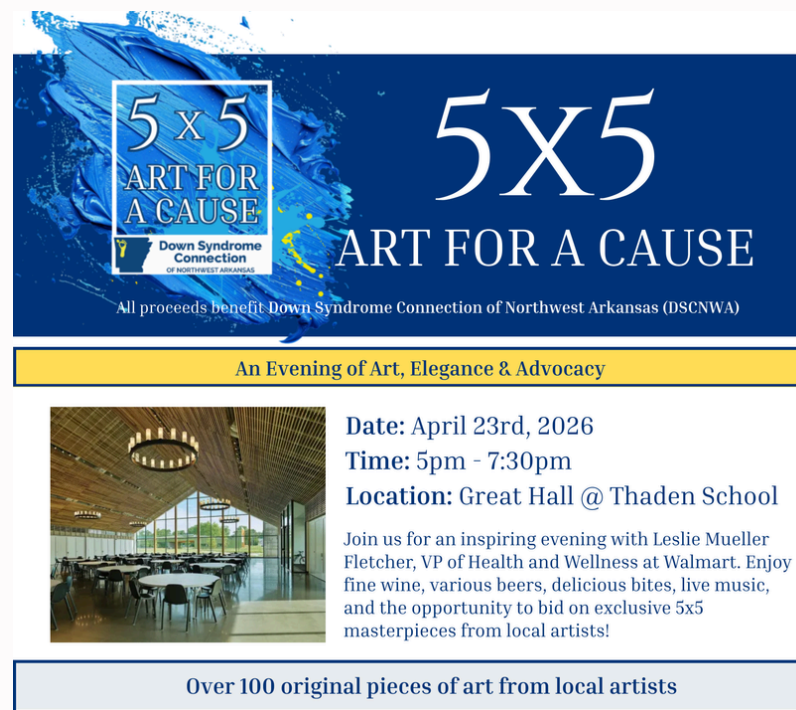


**5x5 ART FOR A CAUSE**

An Evening of Art, Elegance & Advocacy

Date: April 23rd, 2026  
Time: 5pm - 7:30pm  
Location: Great Hall @ Thaden School

Over 100 original pieces of art from local artists



**STARS**

presents

**PLAYHOUSE**

A DOWN SYNDROME CONNECTION OF NWA PRODUCTION



**WORLD DOWN SYNDROME WEEK**

**St. Patrick's Day KARAOKE AND LUCKY FEW CRAFT**

17 MARCH

Lucky Few Craft ages 0-12: 4:30-6:00 PM  
KARAOKE ages 13+: FROM 6:30-8:00 PM

DSCNWA COMMUNITY SPACE  
1200 W Walnut St, Rogers, AR 72756 Suite 1429

SPECIAL TREATS WILL BE SERVED!!

**Tumbler Designing Party**  
Hosted By Stephanie Doty

World Down Syndrome Day



**5x5 ART CLASS**

JOIN US FOR A \$400

COMMUNITY ROOM @ CFN

FEBRUARY 26  
6:15 PM - 7:30 PM

LEARN HOW TO DRAW & PAINT A BIRD

FOR MORE INFORMATION: @DSCNWA.ORG

Buy Tickets Online [www.dscnwa.org](http://www.dscnwa.org)

Become a Sponsor [www.dscnwa.org](http://www.dscnwa.org)



**STEP UP FOR DOWN SYNDROME FUNDRAISER**

**SAVE THE DATE**

**Oct 24**

2025





# Community Partners



# Trusted Resource

## UPDATED RESOURCE COLLECTION ON DSCNWA WEBSITE

- Directories
  - Recreational Opportunities
  - Comprehensive Care Providers
  - National Organizations
  - Supplies Providers
- State Support
- Financial Resources
- Tips and Tricks by Age
- New and Expecting Parents
- Advocating for Your Child
- Common Medical Conditions
- Education Post and Secondary



Global DS Member



Medical Outreach





# Member Survey Overview

## Survey Questions

1. **What is the age range of your child/children**
2. **Tell us your favorite programs**
3. **Tell us about any programs you would like to see in the future.**
4. **Would you like to leave your info to be contacted 1:1 by a board member? If so, please leave your contact info below.**

## Survey Snapshot

- 18 total member responses
- Families represented across multiple age groups
- Largest response group: Adults 19+
- Feedback used to guide programming priorities



# What We Heard Across All Ages

## What Members Value Most

- Life Skills Development (ADLs, independence, real-world skills)
- Social Opportunities (hangouts, dances, community outings)
- Parent Connection (support networks, shared learning)

## What Families Are Looking For

- Structured skill-based programming
- More opportunities for social engagement
- Programs that grow with individuals as they age



# Member Feedback by Age

## Early Childhood & School Age (0–12)

- Parents value connection with other families and early support
- Interest in hands-on learning and communication development
- Family-friendly gatherings and activities that build friendships
- Desire for clear pathways as children grow into teen programs

## Teens & Young Adults (13–18)

- Strong interest in peer social opportunities
- Skill-building activities that support independence
- Inclusive environments to build friendships and confidence



# Member Feedback by Age

## Adults (19+)

- Largest group represented in survey responses
- Life-skills development and independence training are top priorities
- Strong interest in continued social opportunities and community engagement

# Future Programming

## Our Approach Moving Forward

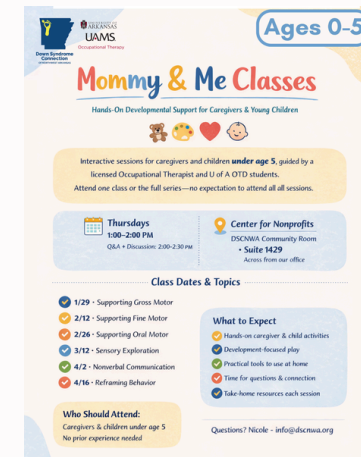
- Expand life-skills programming through partnerships
- Create meaningful social opportunities
- Build sustainable programs that grow with our community

## What We're Doing Next

- Strengthening life-skills programming
- Expanding social opportunities
- Supporting parents through education and connection

# Community Space

## Year to date Events & Workshops



# Community Space

## How to plan an Event Workshop



**AGES 13+**

Down Syndrome Connection  
of Northwest Arkansas

Plan It! Host It!  
Celebrate It!  
*A Hands On Planning  
Workshop*

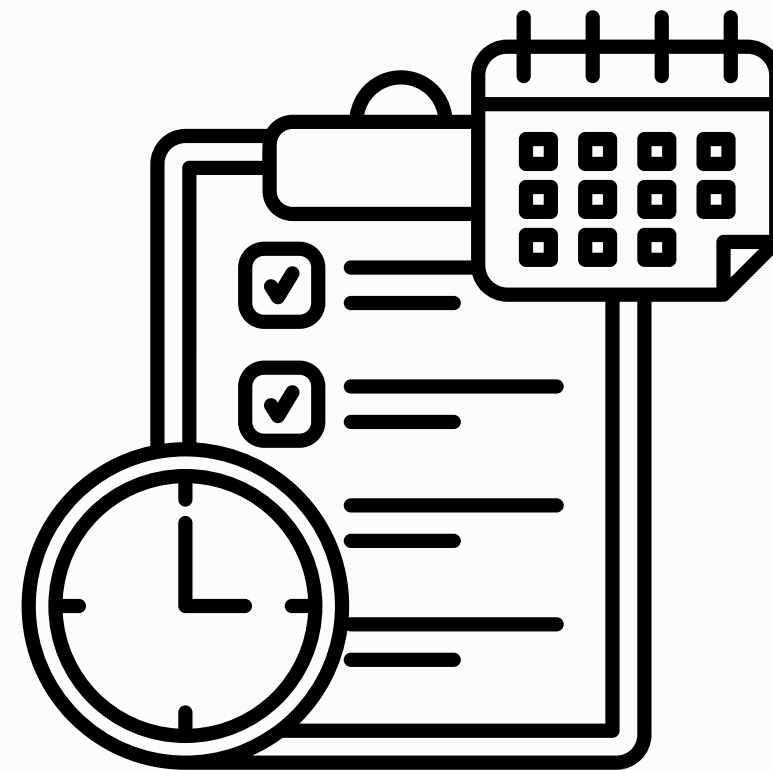
Join us for a how-to  
brainstorming and planning  
events session.

**Friday April 17 7:00-8:30PM**

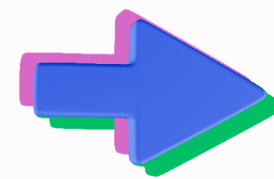
DSCNWA Community Space  
Center for Nonprofits  
1200 W Walnut St., Rogers, AR  
1429

Light refreshments will be serv

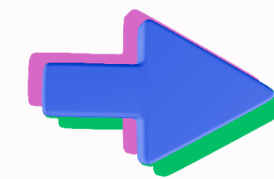
Please  
www.



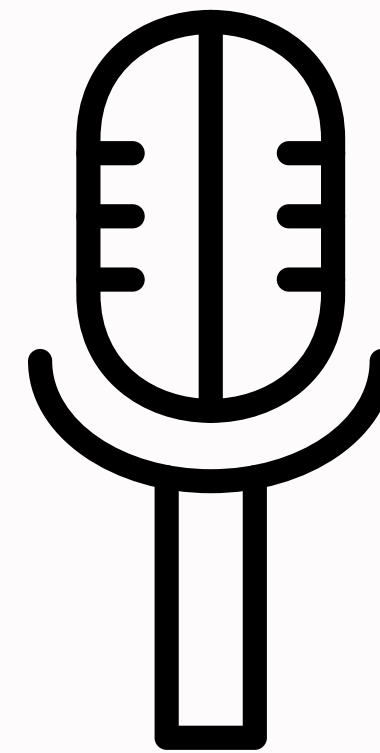
Plan  
it



Host  
it



Celebrate  
it



# Upcoming Programs

## 14 Programs Year to date (Jan-Mar)

### APRIL

### MAY

### JUNE

**Ages 10+**

### DSCNWA Dance Workshop

## Line Dance

Dance With Me  
210 E Chestnut St  
April 20  
Don't forget to register  
Wear your cowb

**Ages 0-5**

### NEW Parent Tribe

A small-group experience for parents of children ages 0-5 to connect, share stories, and learn about benefits and early development. Childcare provided and led by parents in our community.

**Dates**  
1/24 - 10:00 AM  
2/21 - 2:00 PM  
\*3/21 @ BIG Whiskey Celebration  
4/18 - 2:00 PM  
5/16 - 10:00 AM  
6/20 - 2:00 PM  
7/18 - 10:00 AM  
8/15 - 2:00 PM  
9/19 - 10:00 AM  
10/17 - 2:00 PM  
11/21 - 10:00 AM  
\*Holiday Break

Held on the 3rd Saturday of each month  
Light snacks & water will be provided

**AGES 10+**

### DSCNWA Dance Workshop

**MAY 18 7:30-8:20 PM**

DANCE WITH ME STUDIO  
BY AURA  
210 E CHESTNUT ST.,  
ROGERS, AR 72756

DON'T FORGET TO REGISTER ON [WWW.DSCNWA.ORG](http://WWW.DSCNWA.ORG)

Wear pink for Mother's Day!

**Ages 0-5**

### NEW Parent Tribe

A small-group experience for parents of children ages 0-5 to connect, share stories, and learn about benefits and early development. Childcare provided and led by parents in our community.

**Dates**  
1/24 - 10:00 AM  
2/21 - 2:00 PM  
\*3/21 @ BIG Whiskey Celebration  
4/18 - 2:00 PM  
5/16 - 10:00 AM  
6/20 - 2:00 PM  
7/18 - 10:00 AM  
8/15 - 2:00 PM  
9/19 - 10:00 AM  
10/17 - 2:00 PM  
11/21 - 10:00 AM  
\*Holiday Break

**Location**  
Rm 5 & 6 (1st floor) @ CFN  
1200 W. Walnut St, Rogers

Held on the 3rd Saturday of each month  
Light snacks & water will be provided

**AGES 10+**

### DSCNWA DANCE WORKSHOP

**JUNE 15 7:30-8:20 PM**

DANCE WITH ME STUDIO BY AURA  
210 E CHESTNUT ST., ROGERS, AR 72756

DON'T FORGET TO REGISTER ON [WWW.DSCNWA.ORG](http://WWW.DSCNWA.ORG)

**80s**

DRESS LIKE YOUR FAVORITE 80'S SINGER OR ACTOR!

**Ages 0-5**

### NEW Parent Tribe

A small-group experience for parents of children ages 0-5 to connect, share stories, and learn about benefits and early development. Childcare provided and led by parents in our community.

**Dates**  
1/24 - 10:00 AM  
2/21 - 2:00 PM  
\*3/21 @ BIG Whiskey Celebration  
4/18 - 2:00 PM  
5/16 - 10:00 AM  
6/20 - 2:00 PM  
7/18 - 10:00 AM  
8/15 - 2:00 PM  
9/19 - 10:00 AM  
10/17 - 2:00 PM  
11/21 - 10:00 AM  
\*Holiday Break

**Location**  
Rm 5 & 6 (1st floor) @ CFN  
1200 W. Walnut St, Rogers

Held on the 3rd Saturday of each month  
Light snacks & water will be provided

**UAMS**

### Mommy & Me

Hands-On Developmental Support

Interactive sessions for caregivers and increased Occupational Therapist support. Attend one class or the full series—no commitment.

**Thursdays 1:00-2:00 PM**  
OEA + Discussion 2:00-2:30 PM

**Class Dates & Topics**

- 1/29 - Supporting Gross Motor
- 2/12 - Supporting Fine Motor
- 2/26 - Supporting Oral Motor
- 3/12 - Sensory Exploration
- 4/12 - Nonverbal Communication
- 4/16 - Reframing Behavior

**Who Should Attend:**  
Caregivers & children under age 5  
No prior experience needed

Questions? Nicole - [info@dscnwa.org](mailto:info@dscnwa.org)

**Ages 13+**

### JOIN US FOR ART WITH HEART: THANK YOU CARD WORKSHOP

April 10 @ 5-7pm  
Community Rm

Create a one-of-a-kind piece that will be featured on our official thank you cards—shared with the incredible community that supports our mission.

All materials provided

**Host It! Celebrate It! On Planning Workshop**

Join us for a how-to planning and planning session.

**Friday April 17 7:00-8:30PM**

DSCNWA Community Space  
Center for Nonprofits  
1200 W Walnut St., Rogers, AR 72756 Suite 1429

Light refreshments will be served

Please RSVP at [www.dscnwa.org](http://www.dscnwa.org)

**DSCNWA Mini Golf**

Saturday May 2, 2026 from 2-4PM

Golf Mountain  
1115 N Dixieland St  
Lowell, AR 72745

**AGES 5-13**

All members age 5-13 will receive paid admission. Parents and siblings that want to participate the cost is \$10/person at the gate.

\*This is not a drop off event\*

Don't forget to register:  
[www.dscnwa.org](http://www.dscnwa.org)  
DSCNWA Center for Nonprofits Suite 1424-1200 W Walnut St., Rogers, AR 72756

Stay Tuned

**DSCNWA ALL AGES**

### MALCO MOVIE EVENT

**JUNE 27 9AM**

Malco Pinnacle Hills Cinema  
2100 S Bellview Rd., Rogers, AR 72758

POPCORN AND DRINK WILL BE PROVIDED TO EACH PARTICIPANT

Stay Tuned

# Upcoming Events

## APRIL

**5x5 ART FOR A CAUSE**  
All proceeds benefit Down Syndrome Connection of Northwest Arkansas (DSCNWA)

An Evening of Art, Elegance & Advocacy



**Date:** April 23rd, 2026  
**Time:** 5pm - 7:30pm  
**Location:** Great Hall @ Thaden School

Join us for an inspiring evening with Leslie Mueller Fletcher, VP of Health and Wellness at Walmart. Enjoy fine wine, various beers, delicious bites, live music, and the opportunity to bid on exclusive 5x5 masterpieces from local artists!

Over 100 original pieces of art from local artists

GA Ticket:	VIP Ticket:	Standard Table (8 seats):	GA, VIP & Table tickets available Wine, Beer & nonalcoholic options Savory & Sweet Bites Live Music & Live Artist on site Acc Sp
<b>\$55</b>	<b>\$250</b>	<b>\$400</b>	

Includes event entry, finger foods, 1x wine/beer, gallery access, and all live art and music experiences. VIP includes 2x GA benefits plus early entry and a premium wine/beer selection (2x wine/beer).

Bid on Artwork by Local Artists—Details Coming Soon!

Questions? Contact: [nicole.terry@dscnwa.org](mailto:nicole.terry@dscnwa.org)

Thank you partners & sponsors: HOPEFAMILYWINES



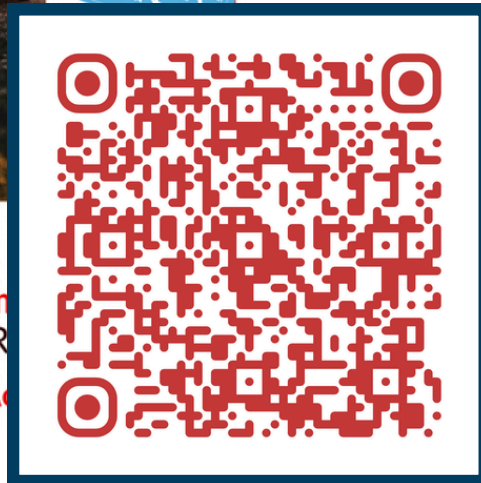
## JUNE

**DSCNWA ALL AGES**  
**MALCO MOVIE EVENT**  
**TOY STORY 5**  
PIXAR JUNE 2026 Disney

**JUNE 27 9AM**

**Malco Pinnacle Hills Ciner**  
2100 S Bellview Rd., Rogers, AR

**POPCORN AND DRINK WILL BE PROVIDED TO EACH GUEST**



## JULY

**STARS**  
presents  
**PLAYHOUSE**  
A DOWN SYNDROME CONNECTION OF NWA PRODUCTION

# ACTION

## Support Us in Achieving Our Strategic Goals

- Participate in our FREE member offerings
- Become a DSCNWA member
- Be an advocate for DSCNWA and connect us with supporters
- Share your story on our private Facebook page
- Encourage your friends and family to get involved
- Host an event & utilize our Community Room
- Connect with us on Facebook  
@downsyndromeconnectionofnorthwestarkansas  
and Instagram @dscnwa



### *Stay in Touch!*

 479-282-3639

 info@dscnwa.org

 www.dscnwa.org

 Center for Nonprofits at St. Mary's  
1200 W. Walnut St. Suite 1424,  
Rogers, AR 72756

